

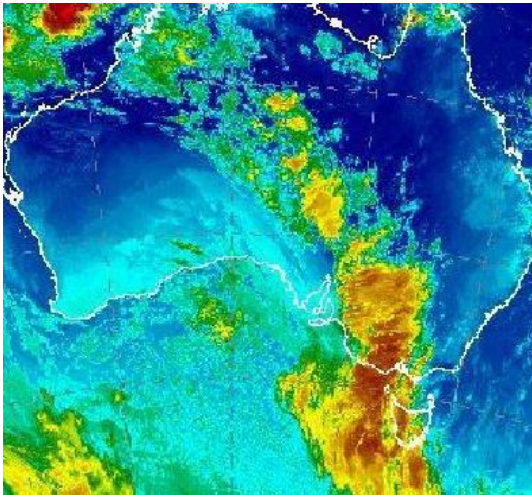


Bass Island Line Update – edition 73

Delivering a Regular Service

The new *John Duigan* schedule has delivered the regular service to King Island that it was intended to do.

Bass Strait is a challenging waterway and the schedule was developed after wide consultation and considerable planning.



Challenging: conditions across Bass Strait

BIL management intentionally built flexibility into the schedule. This flexibility ensures that decisions around sailing times and days takes into account both the needs of our customers and severe weather events that are all too common across Bass Strait.

BIL's intention was always to ensure King Island be provided a weekly service.

At times, due to weather and other factors, *John Duigan* may run slightly earlier or later and this is always to be expected in such challenging waters.

However a weekly service is being achieved with *John Duigan* for the benefit of all of our customers on King Island.

Weight declaration manifest



Please ensure your declared weight manifest is accurate to assist us in maximising vessel capacity during the busy fertiliser period.

An accurate manifest assists BIL to plan better container stowage on *John Duigan* and deliver a more efficient and speedy service.

The declaration is the Gross Weight of the container which includes the weight of the container and its contents.

Gearing up for fertiliser season

The next fertiliser season is just around the corner and BIL wishes to take this opportunity to remind customers about the importance of booking as far in advance as possible.

This will be the first fertiliser season for *John Duigan*. Forward planning will ensure your freight travels on the earliest possible sailing to meet your needs.

Communications contact:

Leigh Arnold
0409 019 939